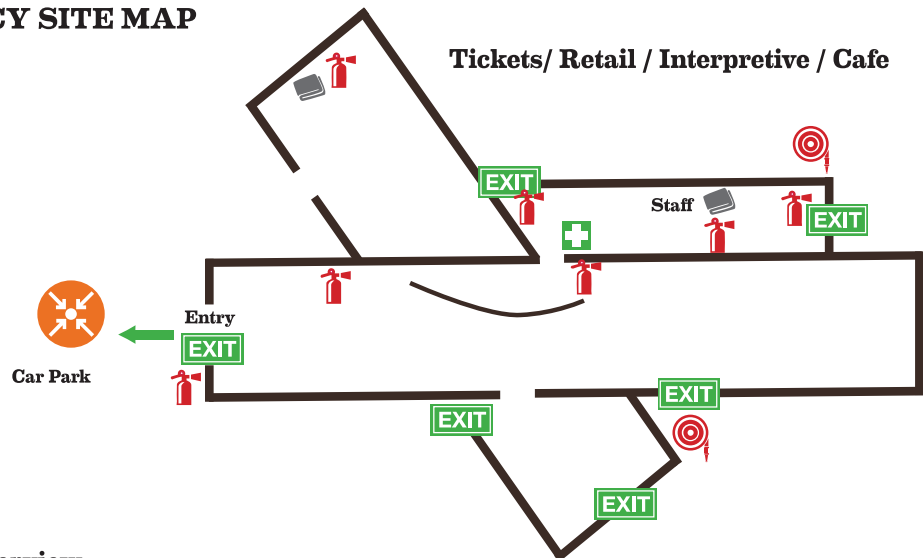


Lake Cave Precinct

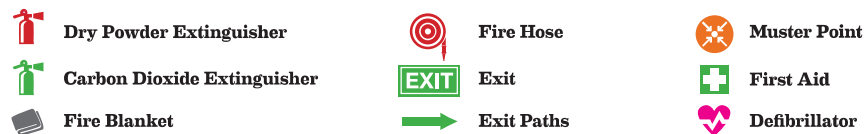
EMERGENCY SITE MAP



Grounds Overview




Key



Emergency Contact Numbers

 **000** (112 from mobiles)
Fire/Police/Ambulance

In case of emergency please call 000. Please stay calm, speak clearly and remember to give your exact location and state

SITE	SITE PH	CONTACT	CONTACT PH	ADDRESS	PLUS CODE	
Mammoth Cave	9780 9953	Rikki Andrew	9780 9958	Caves Road RRN 7459	W2QH+XV Forest Grove	Steve Harrison 9780 5920
Lake Cave	9780 9955/954	Rikki Andrew	9780 9958	Caves Road – corner of Caves and Conto Road RRN 7756	W29M+MC Forest Grove	Mark Delane 9780 5957
Jewel Cave	9780 9951	Rikki Andrew	9780 9962	Caves Rd – corner of Caves and Jewel Cave Road RRN 10596	P3GX+F9 Deepdene	Matt Norton 9780 5980
Ngilgi Cave	9780 9952	Tod Kearns	9780 9963	76 Yallingup Caves Road	925M+5P Yallingup	Sharna Kearney 9780 5923
Eagles Heritage	9780 9979	Josh Higgins	9780 9934	341 Boodjidup Road	2384+42 Margaret River	Cinde Fisher 9780 5924
Cape Naturaliste Lighthouse	9780 9950	Tod Kearns	9780 9963	1267 Cape Naturaliste Road	F279+2F Naturaliste	
Cape Leeuwin Lighthouse	9780 9949	Rikki Andrew	9780 9962	Leeuwin Road	J4GP+2G Augusta	 131 444 Police Assistance (non-urgent)
Forest Adventures South West	9780 5908	Dillen Watson	9780 9995	12 Ludlow Park Road	9FWG+CS Busselton	 132 500 State Emergency Service
Busselton Visitor Centre	9780 9981	Peta Fussell	9780 9947	17 Foreshore Parade	983W+X6 Busselton	 131 351 Western Power
Margaret River Visitor Centre	9780 9984	Tanya Mann	9780 9919	100 Bussell Highway	332F+FJ Margaret River	 138 138 Main Roads

EMERGENCY PROCEDURE - upon receiving advice of a fire or emergency: follow instructions from site senior; make your way to the exits; Meet in the muster point. Remember that only trained personnel should use an extinguisher to fight a fire, and only then, if it is safe to do so.